



Multi Technical Tasks Co.  
شركة مالي تيكنيكال تاسكس

& Interior Design  
Implementation

# COMPANY PROFILE



[www.mttc.com.sa](http://www.mttc.com.sa)



📍 Dammam, Ksa  
📷 mttc2030  
📞 +966 59 9082810

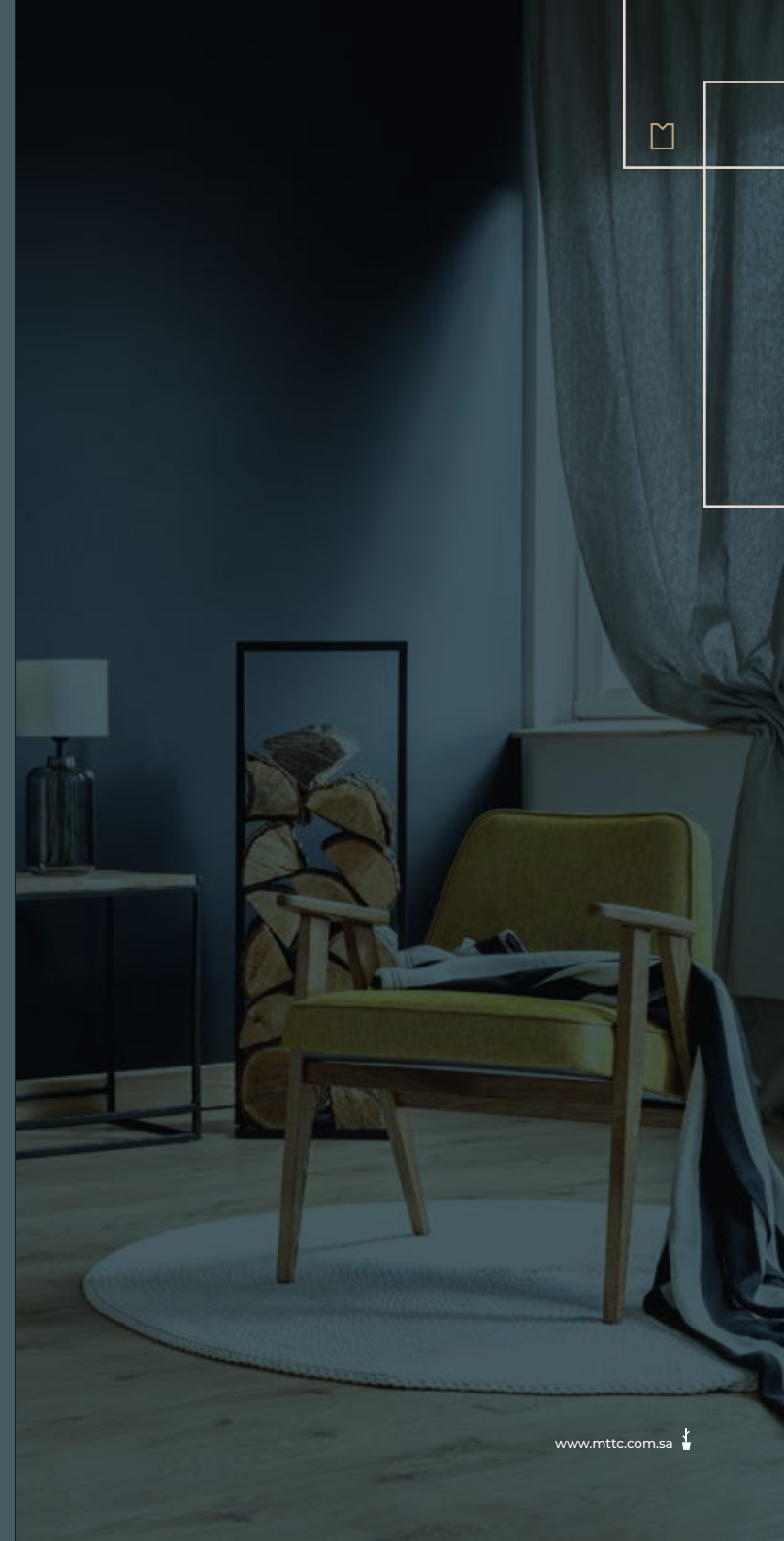


# Table of Content

- 01 | ABOUT THE COMPANY
- 02 | BEST SERVICES
- 03 | ORGANIZATION CHART
- 04 | THE CLIENT LIST
- 05 | OUR PROJECTS
- 06 | 
- 07 | THE UNIQUE APPROACH
- 08 | REGISTRATIONS
- 09 | CONTACT US

# ABOUT THE COMPANY

**MTTC CO.** Turnkey Fit Out Contracting Company Operating In **SAUDI ARABIA** Based In Eastern Region, Since 2012, Managed By A Team Of Highly Qualified And Well Experienced Professionals In Their Respective Fields.



# MISSION

We Aims To Provide Professional Service To Its Clients' Satisfaction By Providing Service Excellence Honoring Deadlines, And Personalized Design According To Clients' Requirements.





# VISION

We Focus On Our Customers' Requirements, Expectations, And Latent Needs, We Evaluate The Need Of Our Customers And Customize The Solution To Match The Innermost Desire Of Them.








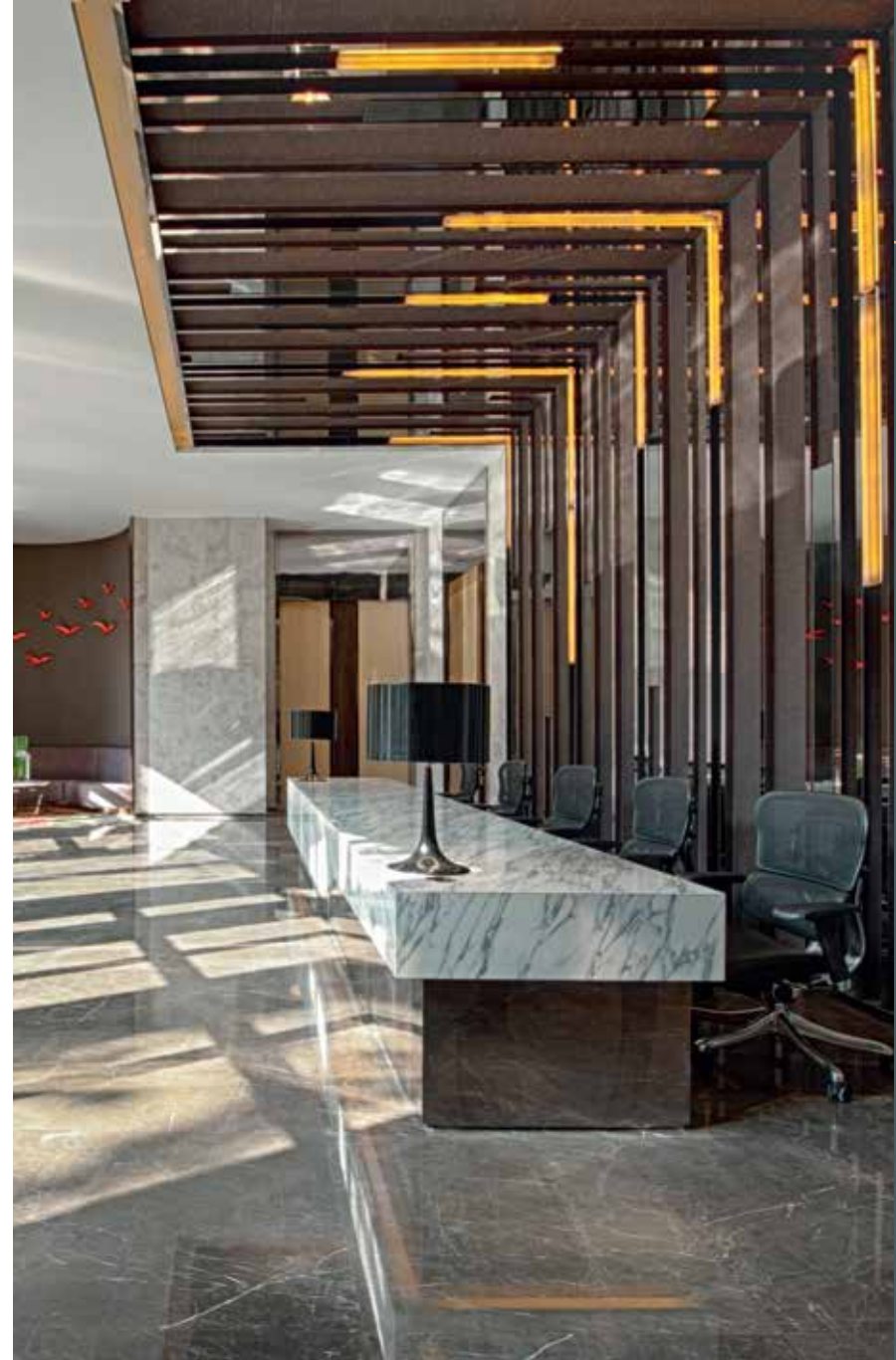
# VALUES

- ⬇ Doing The Right Thing
- ⬇ Having Passion For What We Do
- ⬇ Embracing The Pursuing Change
- ⬇ Providing Uncompromised Quality
- ⬇ Developing Sincere Relationships



# VALUE RE IMAGINEERING

-  FITOUT
-  FURNISHING
-  CONTRACTING
-  FACILITY MANAGEMENT
-  MATERIAL SOLUTIONS





# BEAUTIFYING SPACES

🌿 HEALTHCARE & WELLNESS

🌿 CORPORATE

🌿 HOSPITALITY

🌿 RETAIL



# EMBELLISHING ENVIRONMENTS

- 🌿 HOSPITALS & CLINICS
- 🌿 OFFICES
- 🌿 SHOPS & MALLS
- 🌿 HOTELS & RESTAURANTS



# BEST SERVICES

- **GYPSUM WORKS**
- **JOINERY WORKS**
- **CIVIL WORKS**
- **GLASS WORKS**
- **WALLS & WINDOWS**
- **FLOORING**
- **ELECTRICAL WORKS**
- **FIRE FIGHTING & ALARM**
- **ITWORKS**
- **AVWORKS**
- **SECURITY SYSTEMS**
- **AIR CONDITIONING WORK**



## GYPSUM WORKS

- Partitions - with MR/FR boards, sound insulations
- Wall Paneling
- Plain ceilings with differential heights
- Bulk heads
- Coving
- Grid ceiling works
- Baffle ceiling



## JOINERY WORKS

- Custom made furniture with high quality finishes such as
- Pu, Polyester, etc.
- Kitchen Cabinets
- Display Cabinets
- Decorative Doors
- Veneered wall paneling
- Hardwood/Laminate Parquet Flooring works
- Non-fire rated & fire rated doors
- Custom built counters and cabinets

## **CIVIL WORKS**

- Internal block works
- Plastering
- Screed
- Strong room
- Internal demolition works

## **GLASS WORKS**

- Single glazing or double-glazing partitions
- Demountable partitions
- Glass flooring or ceiling works
- Laminating
- Fusing
- Sand blasting
- Stained glass
- Acid etching
- Glass painting
- Beveling

## **WALLS & WINDOWS**

- Emulsion paint, Fenomastic, stucco and other decorative paints
- Wall paper: paper/vinyl backed  
Mural Surface texture
- Designed films for glass partitions and doors
- Roller blinds, Roman Blinds, Sheer Blinds, Venetian Blind
- Vertical Blinds, Wooden Blinds, with motorized solutions

## **FLOORING**

- Carpet-Tiles, Roll Carpets, Rugs and Entrance mat
- Wooden flooring - Solid / Pre and Laminate parquet
- Resilient flooring - Vinyl, PVS, Linoleum and rubber flooring
- Hard Flooring - Porcelain tiles, Vitrified tiles, Marble/Granite etc.



## **ELECTRICAL WORKS**

- Lighting: LED, Halogen, Metal Halide, TS
- Power points/isolators
- Upgrading or installing new DB, SMDB, tvIDB, Busbar riser
- UPS, Generators
- Preparing power and lighting layouts, load schedules, meter
- schedules and single line diagram

## **FIRE FIGHTING & ALARM**

- Sprinkler works
- Smoke detectors, heat sensors
- Fire alarm panels
- Fire extinguishing systems
- Fire suppression systems for server rooms

## **IT WORKS**

- IT Infrastructure using Cat6, copper, fiber
- PABX/VOIP Solutions
- Server racks, Data centers

## **AV WORKS**

- Projectors & Automated Projection Screens
- AV Control Systems
- Video Conferencing systems
- Interactive whiteboards
- Equipment racks
- System cabling

## **SECURITY SYSTEMS**

- CCTV and DVR solutions
- Biometric time and attendance systems
- Access control solutions and Visitor control system.

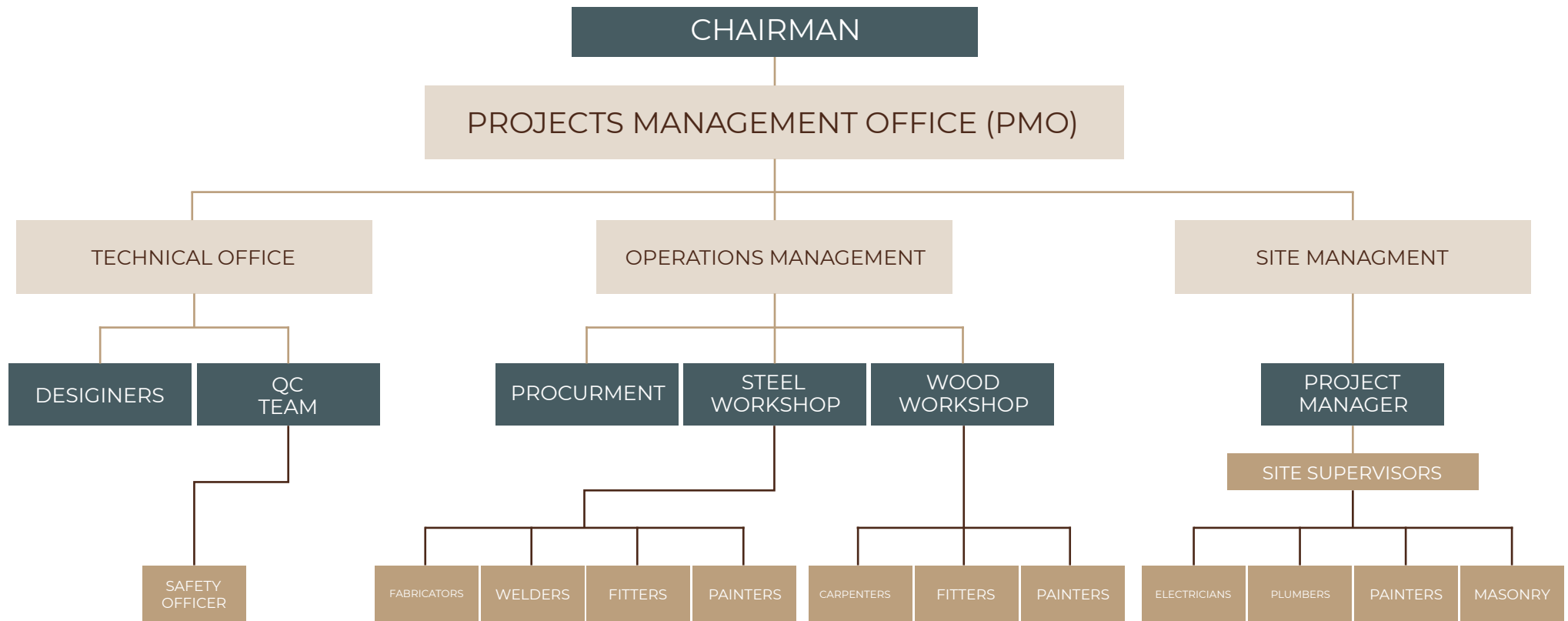


## AIR CALCULATIONS WORK

- Designing HVAC systems, heat load calculations
- Chilled water, DX units, VRF units, refrigerant units, Packaged units
- Closed control units for data centers/server rooms
- Ductwork and Ventilation works
- Refrigerant plants, cold rooms and freezing cold stores



# ORGANIZATION CHART



# WHY MTTC ?

## COST EFFECTIVE PRICES

In project management, cost plays a prominent role.

We have A very competitive team, which continuously keeps track of the new productions, better alternatives available in the market and also enlightens us about the competitive deals, which reduces our cost and hence our clients

## CUSTOMER SATISFACTION

We ensure that our client is regularly informed by us about the project progress, which in turn helps us in offering a better product quality with timely completion to competitive cost.

## ADVANTAGE

We provide total flexibility and we offer various choices for our custom-made FIT-OUT interior packages from the initial concept through the delivery and installation. Also, Our team has a number of dedicated refurbishment specialists for both hard and soft interior fit-outs. Offering single point of contact and project manager for all your fit-out requirements and making it seamless operation.

**“ WE HAVE IN HOUSE WOOD AND STEEL FABRICATION ”**



# MTTC WOOD WORKSHOP

MTTC Wood workshop is a full equipped workshop for fabricating and supply all wood joinery which mainly working for MT interiors inhouse fabrication for fit out projects and serving customers for special unique orders

## Machinery:

- BAND SAW
- PLANNER
- TABLE SAW
- DESK DRILL MACHINE
- THICKNESS MACHINE
- COLD HYDROLIC PRESS MACHINE
- METER SAW
- AIR COMPRESSOR
- HAND TOOLS
- ROUTER
- SANDING MACHINE
- MAILLING MACHINE

## Manpower:

- CARPENTERS
- HELPERS
- FITTERS
- PAINTERS

## Services:

- FABRICATE ANY CUSTOM PIECES AS REQUIRED
- DOORS
- CLADDING
- DECORATIVE ELEMNTS
- SHELVES
- KITCHEN
- RECEPTIONS
- COFFEE BARS

# MTTC STEEL WORKSHOP

MTTC Steel workshop is a full equipped workshop for fabricating and supply all steel work services with very high quality and suitable prices and priorities for the orders from mt interiors fit out projects.

## Machinery:

- LATHE MACHINE
- BORING MACHINE
- PRESS MACHINE
- BENDING MACHINE
- ARM DRILL
- TIG, ARC AND MIG WELDING
- SURFACE GRINDERS
- PLASMA CUTTING MACHINE
- HAND TOOLS

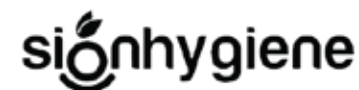
## Manpower:

- MACHINING
- WELDERS
- FABRICATORS
- FITTERS
- PAINTERS

## Services:

- All industrial and decorative Steel fabrications.

# THE CLIENT LIST



# THE CLIENT LIST





# THE CLIENT LIST



# OUR PROJECTS

To View all Our Projects Details  
You Can Visit Our Website .

 [click here](#)



# VISIT OUR FURNITURE Online Store

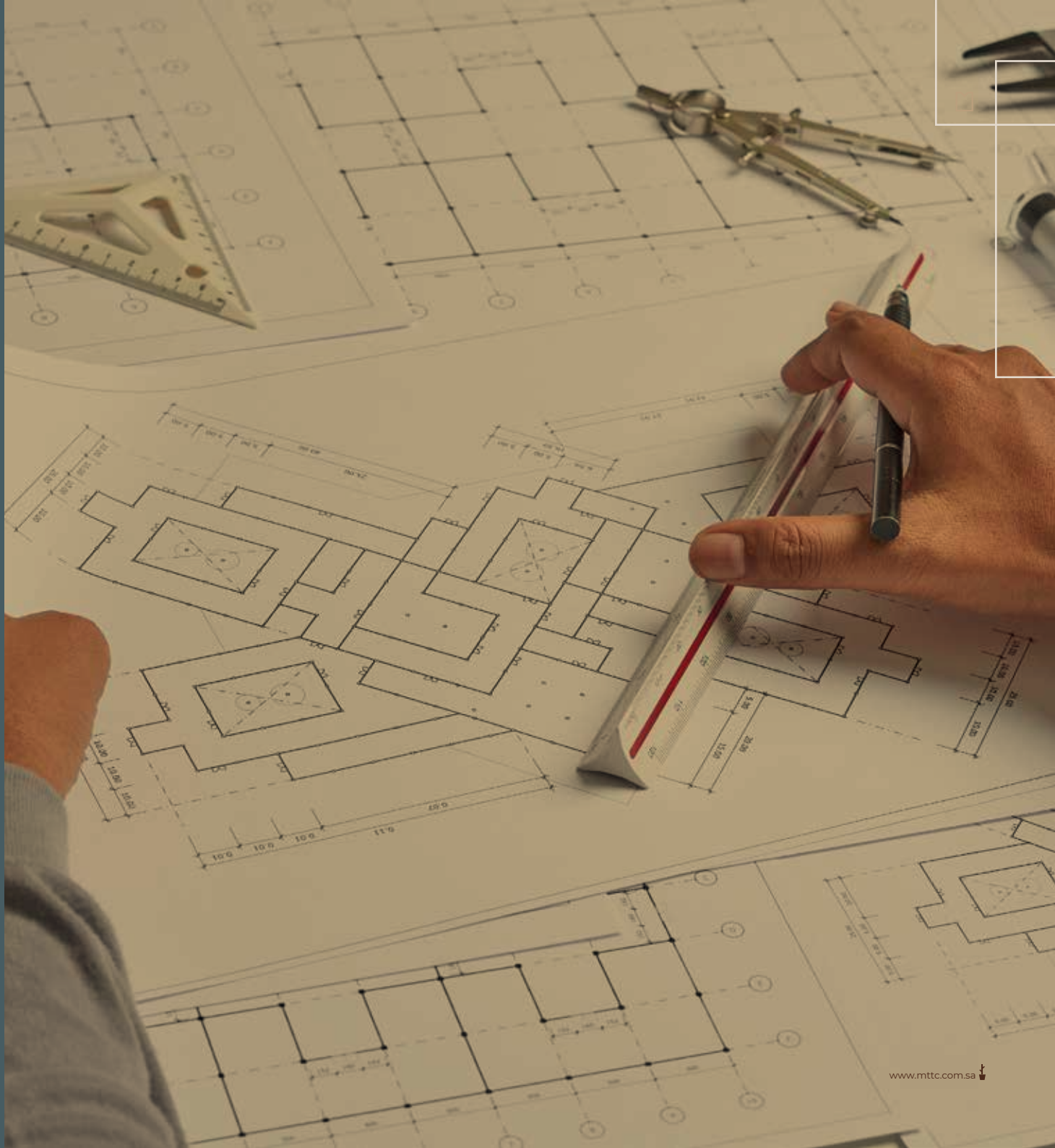




# THE UNIQUE APPROACH

MTTC Co. decor Constantly strives to be the best interior solutions company.

We will achieve this through innovation, focus, and resolve to design & execute world-class office space. Implementing total quality of design and management in our execution has yielded delivery of quality finishes and services at lucrative pricing.





# REGISTRATIONS

## Legal Docs

وزارة التجارة  
Ministry of Commerce

### شهادة السجل التجاري

شركة مالتي تيكنيكال تاسكس

الرقم الوطني الموحد: 7034806112

تاريخ الإصدار: 05/09/2023

نوع الكيان: شركة ذات مسؤولية محدودة

صفات الشركة: (شخص واحد)

حالة السجل: نشط



7034806112

البيانات الأساسية للسجل التجاري

1900  
mc.gov.sa

وزارة الاستثمار  
Ministry of Investment

### Investment Registration Certificate

شهادة تسجيل الاستثمار

Investment Registration Number (IR) رقم تسجيل الاستثمار: 12066450121286

Entity ID رقم المنشأة: 69259

Issue Date تاريخ الإصدار: 10 Aug 2023

Re-Confirmation Date تاريخ التأكيد: 9 Jul 2026

Registration Status حالة التسجيل: Active

Unified Number الرقم الموحد: 7034806112

Phone الرقم الهاتف: +966796654756680

Capital رأس المال: 10000 SAR

البريد الإلكتروني Email: moutaa@mttc.com.sa

اسم المنشأة Entity Name: مالتي تيكنيكال تاسكس

الكيان القانوني Legal Entity: شركة ذات مسؤولية محدودة

Share الحصة	Nationality الجنسية	Investor No رقم المستثمر	Shareholders Names أسماء الشركاء
100.0 %	مصر Egypt	1204506	شركة الدولية للتقنيات المتكاملة

1

1 of 1

VISION 2030

رؤية 2030

[illegible][illegible][illegible]

WE'D LOVE TO HEAR FROM YOU.

# Get in touch with us

Send us a message or visit us Whenever you like

## MTTC

+966 59 908 2810

Saudi Arabia | Dammam  
Shatei Dist.( Barira Hotel )  
Building ( A ) - 3rd Floor  
Office A32A

## MTTC WOOD WORKSHOP

carpentry@mttc.com.sa

## MTTC STEEL WORKSHOP

steel@mttc.com.sa

Khudaria, Dammam, KSA

## EMAIL

projects@mttc.com.sa

info@mttc.com.sa

## WEBSITE

www.mttc.com.sa

FOR OUR LATEST  
UPDATES FOLLOW US  
ON THE INSTAGRAM  
PAGE

mttc2030





Multi Technical Tasks Co.  
شركة مالي تيكنيكال تاسكس

**Saudi Arabia - Eastern Province**

المملكة العربية السعودية - المنطقة الشرقية

Dammam, Ksa P.O. 32435

+966599082810 info@mttc.com.sa

mttc.com.sa